

Well Priced to Move 7,510 RSF Downtown Brooklyn Office Sublet, 25 Chapel Street

FLOOR / AREA (RSF)

Approx. 7, 510 rentable square feet

POSSESSION

30 days

TERM

Sublease ending September 30, 2023

ASKING RENT:

Upon request

HIGHLIGHTS

New building installation end 2013, Unusually light and bright Perfect for client-centered programs and other uses.

24/7 Attended lobby

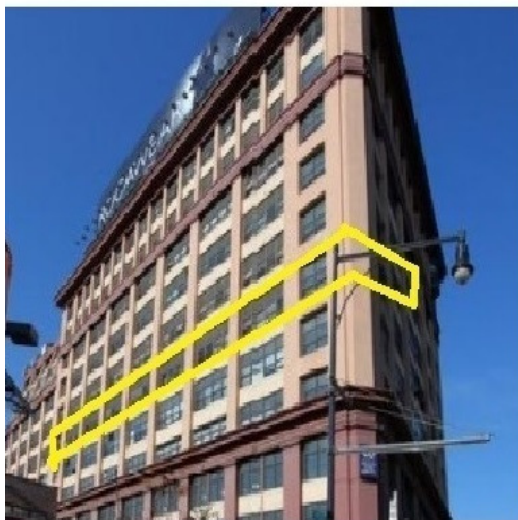
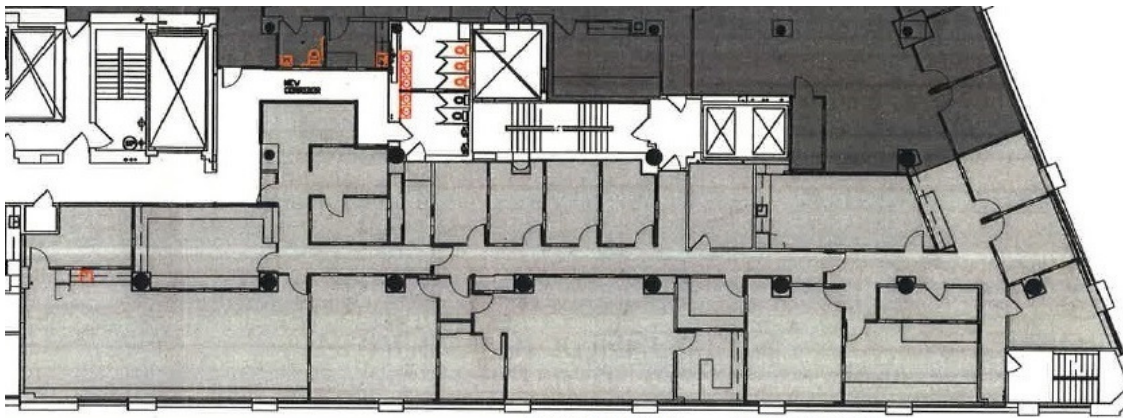
Variety of small and large partitioned spaces, including reception areas, 2 pantries, 2 very large multi-purpose rooms,

LOCATION / TRANSPORTATION

Downtown Brooklyn access to A,C,F,2,3,4,5,Q,B,D,R,M, multiple bus lines.

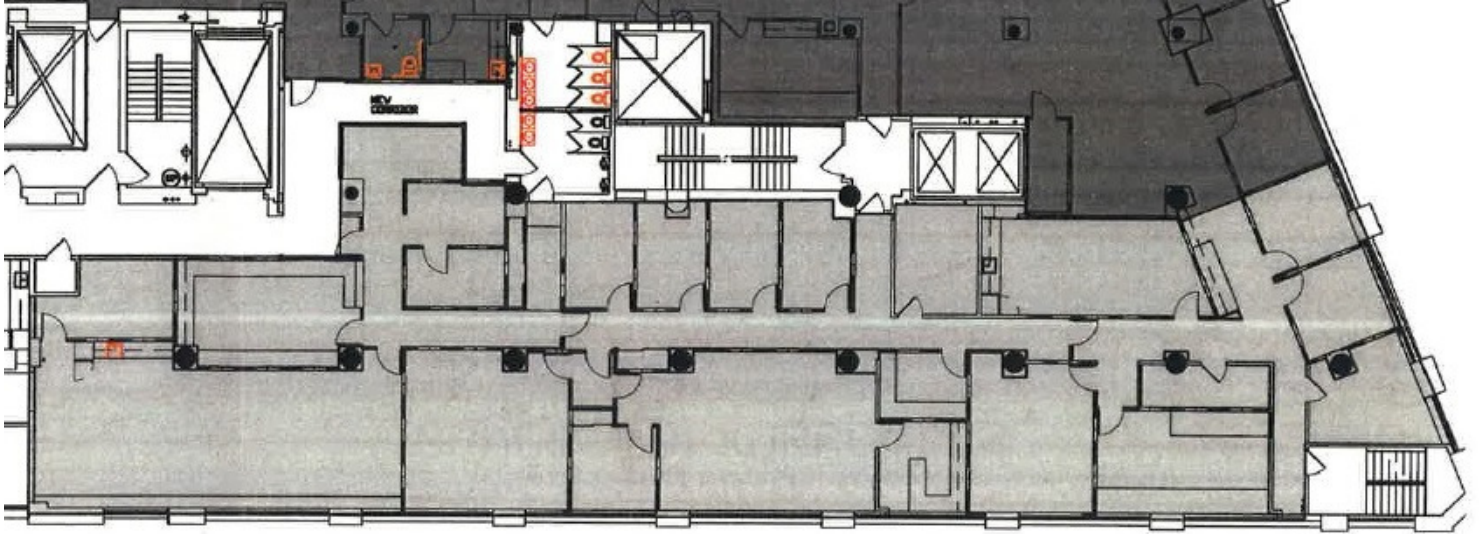
Easy on-off access to bridges and BQE

On-Site Parking

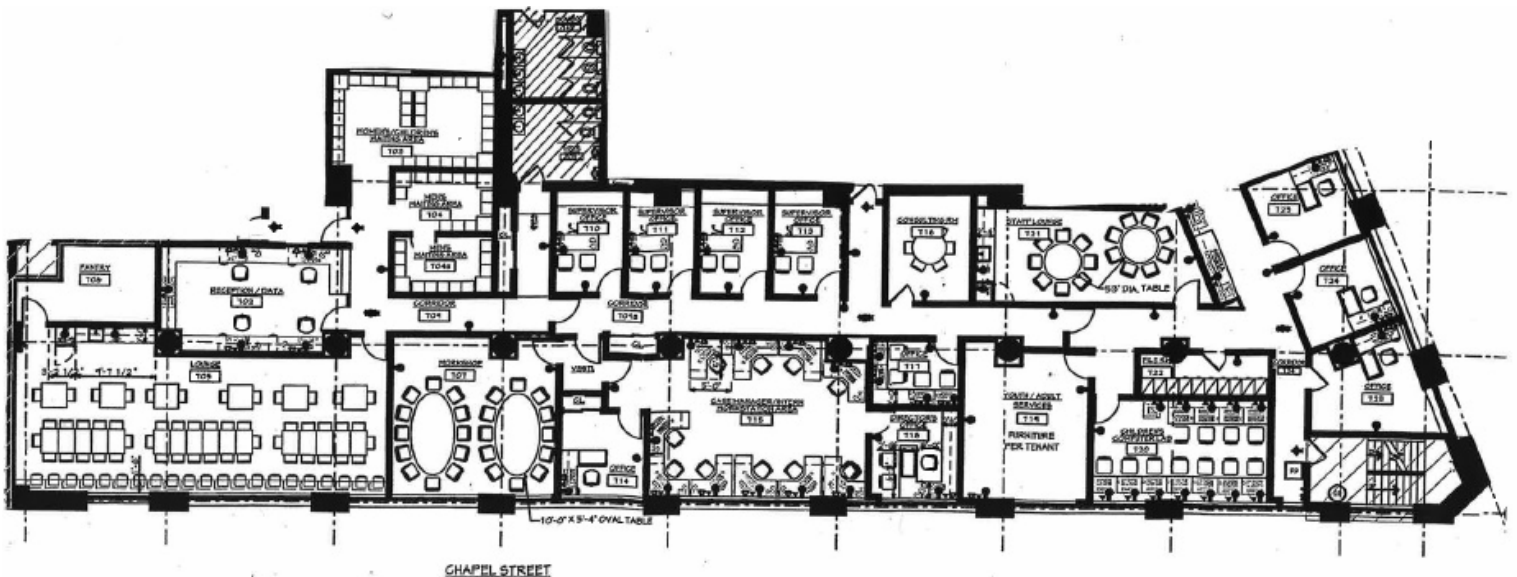


All information is from sources deemed reliable and is submitted subject to errors, omissions, change of price, rental, prior sale, and withdrawal without notice

Well Priced to Move
7,510 RSF Downtown Brooklyn Office Sublet,
25 Chapel Street



SAMPLE FURNISHED



All information is from sources deemed reliable and is submitted subject to errors, omissions, change of price, rental, prior sale, and withdrawal without notice

Well Priced to Move
7,510 RSF Downtown Brooklyn Office Sublet,
25 Chapel Street

OTHER TENANTS

Hurkin Cohen Attorneys

Susan Dobin Architect

Think*Fabricate

Energy Concepts Engineering

The Granger Collection

New York City College of Technology, The Adult Learning Center,
Division of Continuing Education and Administrative Offices

Center for the Elimination of Violence in the Family

Catholic Charities

Jewish Board of Family and Children Services

Brooklyn LAB Charter School

New York City Police Department - Traffic Division

:ICL - Guidance Center of Brooklyn Heights

Center for Community Alternatives

Callen Lorde Community HealthCenter (lease completed, move in 2018)

All information is from sources deemed reliable and is submitted subject to errors, omissions, change of price, rental, prior sale, and withdrawal without notice